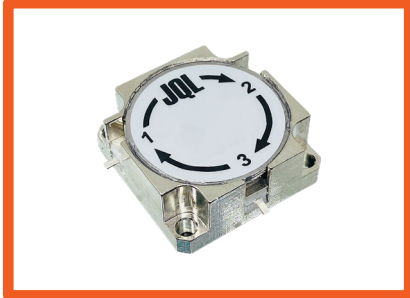


S Band Drop-In Circulator

JCD2448T2452M30

Description:

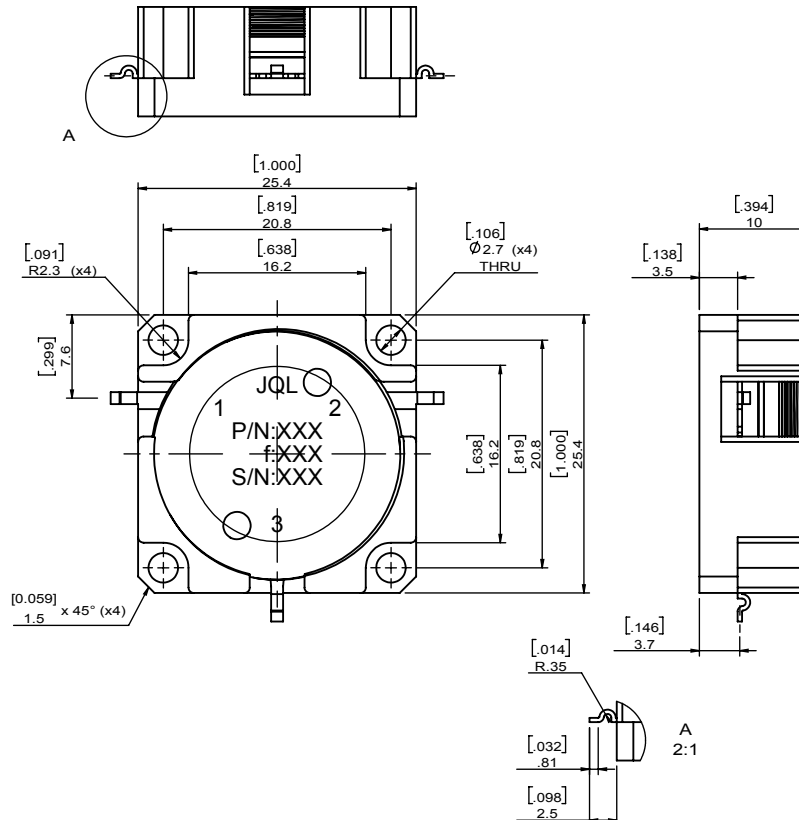


JCD2448T2452M30 is a drop-in circulator in the frequency 2.4485~2.4515GHz. The device is extremely stable over the temperature range of -40°C to +85°C, with maximum insertion loss of 0.25 dB and minimum return loss of 32.0dB @+25°C & 30.0dB @-40~+85°C. This circulator can handle a CW Power FWD/REV/PK(Watt) of 300/300/-

Electrical Specification

| Part Number | JCD2448T2452M30 |
|-------------------------|---------------------------------|
| Frequency (MHz) | 2.4485~2.4515 |
| Insertion Loss(dB)MAX | 0.25 |
| Isolation(dB)MIN | 32.0 @+25°C 30.0 @-40~+85°C |
| Return Loss(dB)MIN | 32.0 @+25°C 30.0 @-40~+85°C |
| Operating Temperature | -40°C~+85°C |
| Power FWD/REV/PK(Watt) | 300/300/- |
| Tab(W×LG×THK)(mm[Inch]) | 1.1[.043]x2.5[.098]x0.4[.016] |

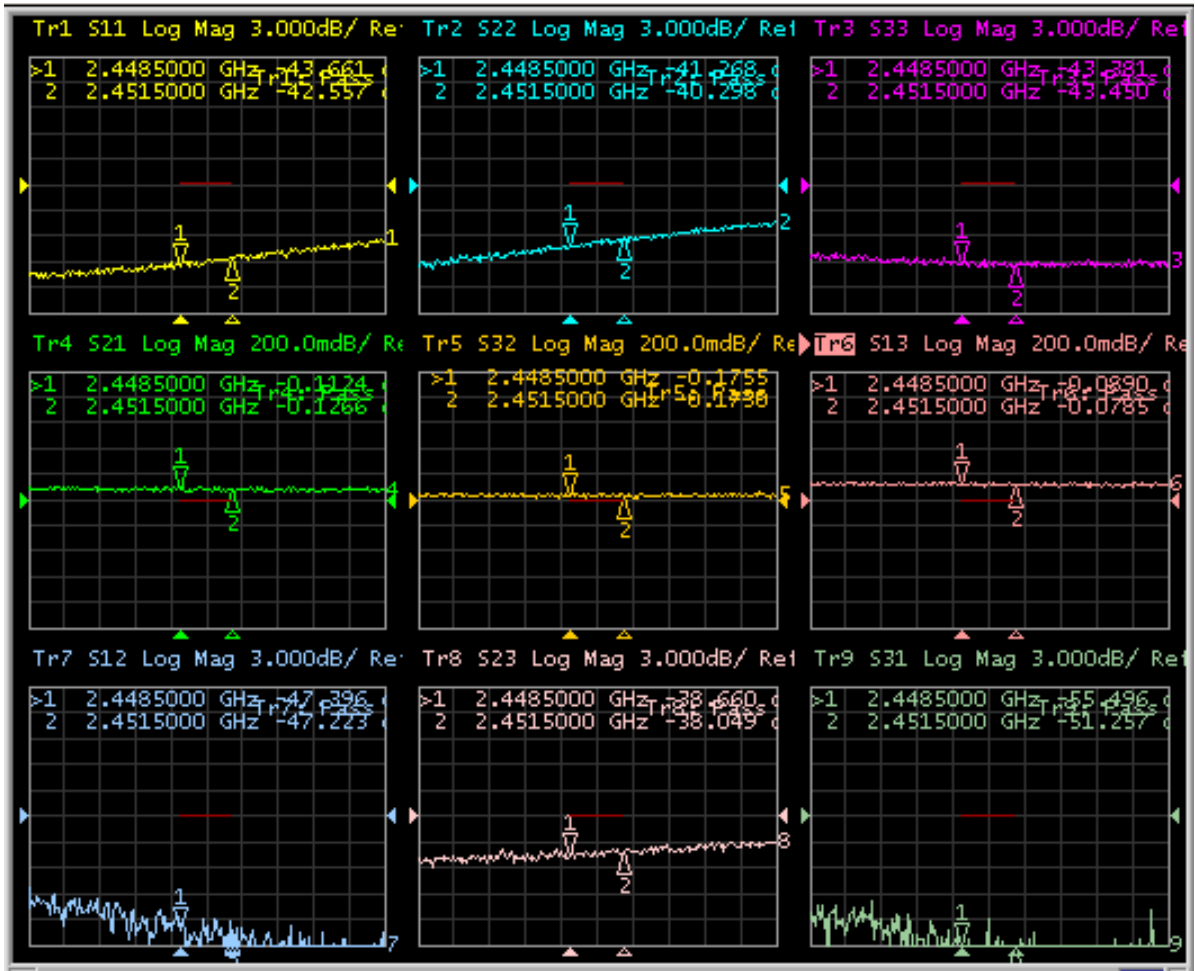
Outline



S Band Drop-In Circulator

JCD2448T2452M30

Test Data



Applications

- High Power