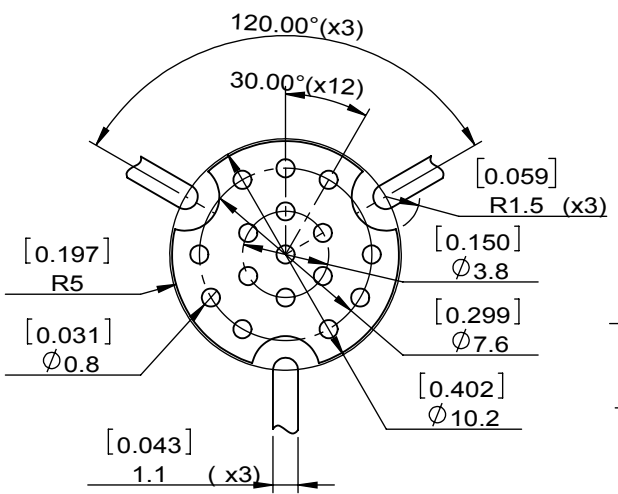
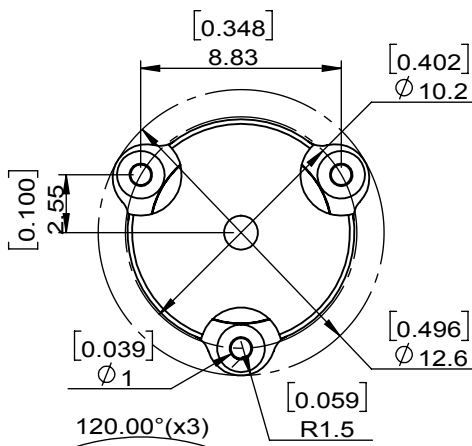
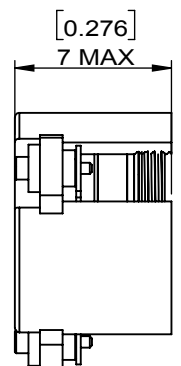
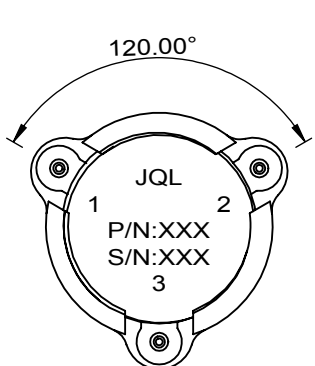
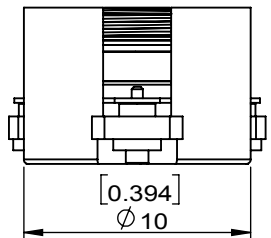
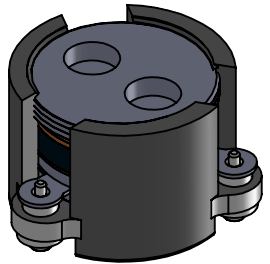
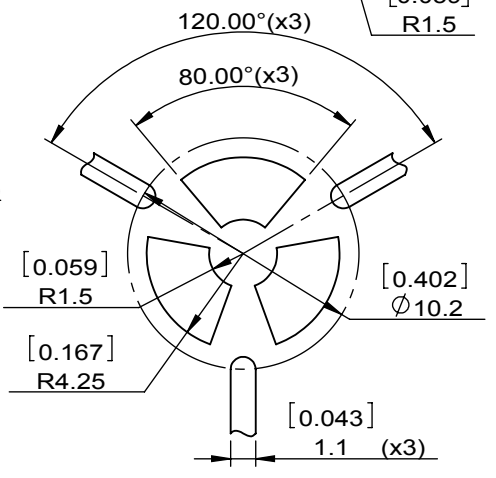


1		2		3		4		5		6	
Document No.	QR4-700-T-003	REV.	A/0	REV.	DESCRIPTION	REVISOR	DATE	APPROVED			
				0		mw.Yang	08.23.2024	Y.Yang			



Copper Pattern



Soldermask Pattern

SPECIFICATIONS	
Part's Number	JCM3300T4200PT2
Frequency(GHz)	3.300~4.200
Direction	CW
Insertion Loss(dB)MAX	0.60
Isolation(dB)MIN	16.0
Return Loss(dB)MIN	16.0
3rd IMD(dBc)MAX	-
Power FWD/REV/PK(Watt)	20/20/100
Operating Temperature(°C)	-40~+85
Storage Temperature(°C)	-
Additional Notes	-

JQL JQL Technologies Corporation

MATERIAL: STEEL	DWG NO: JCM3300T4200PT2			
SURFACE TREATMENT: SILVER PLATING	DWG BY:	mw.Yang	08.23.2024	SCALE
DESCRIPTION: SMT CIRCULATOR	CHK'D BY:			3:1
	APPV'D BY:			
	Unit:	Tolerance:	The First:	A4
	mm[inch]	Liner: ±0.25 Anguar: ±0.5°		



This document is the property of JQL Technologies Corporation. It cannot be copied, duplicated, used for manufacturing purposes or communicated to third party as a whole or partly, without the written consent of JQL Technologies Corporation.